

# SI 1830

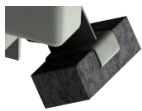
## CENTRIFUGAL PUMP



### Durable pump

The SI 1830 pump is designed to be easily installed whatever the layout of the premises. Capable of evacuating up to 400 l/h, the SI 1830 pump is suitable for air conditioning units and industrial refrigeration displays. Strong, the SI 1830 tolerates charged, high temperature and acidic condensates (pH>2) produced by oil condensing boilers.

## BENEFITS



### • High resistance

- Heavy duty **IPX4** design
- **Oil and acid resistant** float
- Mechanical structure **resistant to shocks**

### • High performance

- Can discharge condensates **up to 3.7m**
- **Up to 400 l/h**, for shorter running time
- **Low sound level** – quiet operation



### • Installation in any place

Pump can be floor mounted, attached on a wall or stand alone without tank.

### • Versatile

Easily removable tank and reversible pump, to allow mounting rather on the left or on the right of the application and choosing the side of the water exit.

## KIT CONTENTS



- One-piece centrifugal pump with tank (2L)
- Integrated barb end check valve Ø ext. 10 mm (3/8")
- Power cord (1.5m, **European plug**)
- Safety switch cord (1m, bare ends)
- Inlet hose: 5 m roll Ø int. 10 mm (3/8")
- Adaptor Ø int. 15-20-24-32-40 mm (Ø int. 5/8"-3/4"-1"-1 1/4"-1 1/2")
- 2 screws + 2 plugs

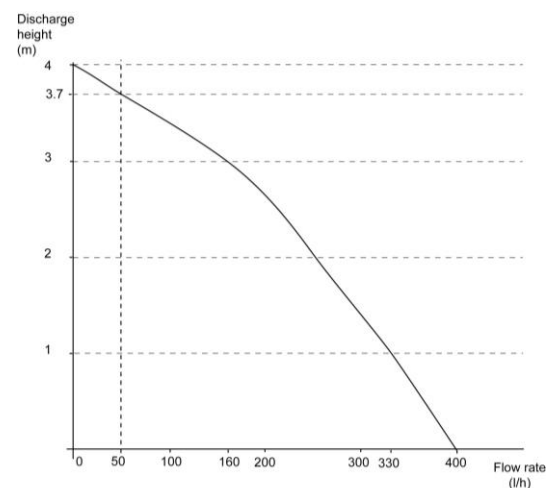
## APPLICATIONS

- Column air conditioning units • Multi cassettes
- Gas & oil condensing boilers • High efficiency gas furnace
- Refrigerating display cabinets • Evaporators • Ducted units



TECHNICAL SPECIFICATION	
Max. flow rate	400 l/h
Max. discharge head	3.7 m
Max pressure	4 m (flowrate =0)
Sound level in application at 1m(3.3ft): ≤ 43 dBA (Measured in Sauermann acoustic lab, pump operating with water)	
Mains supply	230V~ 50Hz - 75 W – 0.80A
Detection levels	On : 27mm, Off : 21mm, Safety : 32mm
Safety switch	NC 4 A résistive – 250V
Max. condensate temperature	65°C, 80°C in short peak
Max. condensate acidity	pH > 2 (Gas & oil condensing boilers)
Thermal protection (overheating)	120°C (auto-reset)
Operating conditions	15%: 1s ON – 5s OFF
Protection	IPX4
Safety standards	CE and EAC
RoHS directive	Compliant
WEEE directive	Compliant
Weight (including box)	2.5 kg
Packaging	5 pcs: L293xI136xH183 mm
Pallet quantity	90 pièces

ACTUAL FLOW RATES (l/h)				
Vertical Discharge head	Total tube length (Ø int. 10 mm, 3/8")			
	5 m	10 m	20 m	30 m
1 m	320	270	190	150
2 m	240	200	130	100
3 m	150	110	75	50
4 m	50	40	25	15
5 m	0	0	0	0



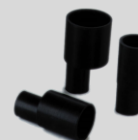
## RECOMMENDED ACCESSORIES



**Hose Ø int. 10mm (3/8")**  
ACC 00125 : 25 m  
ACC 00126 : braided, 25 m



**Check valve**  
for replacement  
Ø ext. 10 mm (3/8")  
ACC 00801



**Adaptators**  
Ø int. 24/25 mm: ACC 00225  
Ø int. 32 mm: ACC 00230  
Ø int. 40 mm: ACC 00240